

Welcome to Unit 652

Gondola Chalet

To UNLOCK the door:

Enter the code

Press 

Wait 15 seconds until you hear it unlock

To LOCK the door:

Press 

DOORBELL:

Ring the doorbell calls Gretchen's cell phone.

It does not ring inside.

Ring it anytime to reach Gretchen with any questions, or call her at 207-357-5639

GONDOLA
• CHALET •

Fireplace Operation

- Left Damper Lever- All the way in
- Right Damper Lever – All the way to the left
 - Don't touch the damper after that. It will adjust automatically based on the heat
- Open door
- Ball up a few pieces of paper towels and put on the bottom. Put fire starter rectangle on top of that, and 3-4 pieces of wood on top of that.
- Light the fire starters
- Slowly close the door as the fire starts going. Adjust door opening depending on the flame
- After fire is going well and some coals have formed, start slowly closing the door handle. Adjust handle depending on the flames
- Once fire is well established, completely close door handle.
- When putting in more wood, open door and add wood quickly. Don't keep door open too long or the room will fill with smoke.
- Blower can be turned on to heat the room by turning the dial next to the fireplace. It will not turn on until the fire is hot enough.
- DO NOT REMOVE ASHES

TV Operation

- To **Watch Cable:**

Hold Mic button on TV remote and say "Switch to HDMI 2". Use the Cable remote

- To **Watch FireTV:**
- Hold Mic button on TV remote and say "Switch to HDMI 1". Use the FireTV remote

Arcade Instructions:

- Turn On. Switch on lower room side of the console
- Navigate games using first player joystick
- To select a game, press the 1st player icon button. Once opened...
 - For **1 PLAYER** start game by pressing 1st player icon button.
 - For **2 PLAYER** start game by pressing 2nd player icon located on opposite side of the console.
- To exit game, hold 1st player icon for 3-5 seconds until a pop-up appears that says “release now”. Scroll down to exist & hit the 1st player icon again.

To Play Wii:

Turn on TV

Turn on Wii on (using wii remote or on the console)

Press Mic on TV Remote & say “Switch to HDMI3”

Use Wii controller to select USB LOADER GX

Select START Using Wii Remote

Chose game, wait, press START

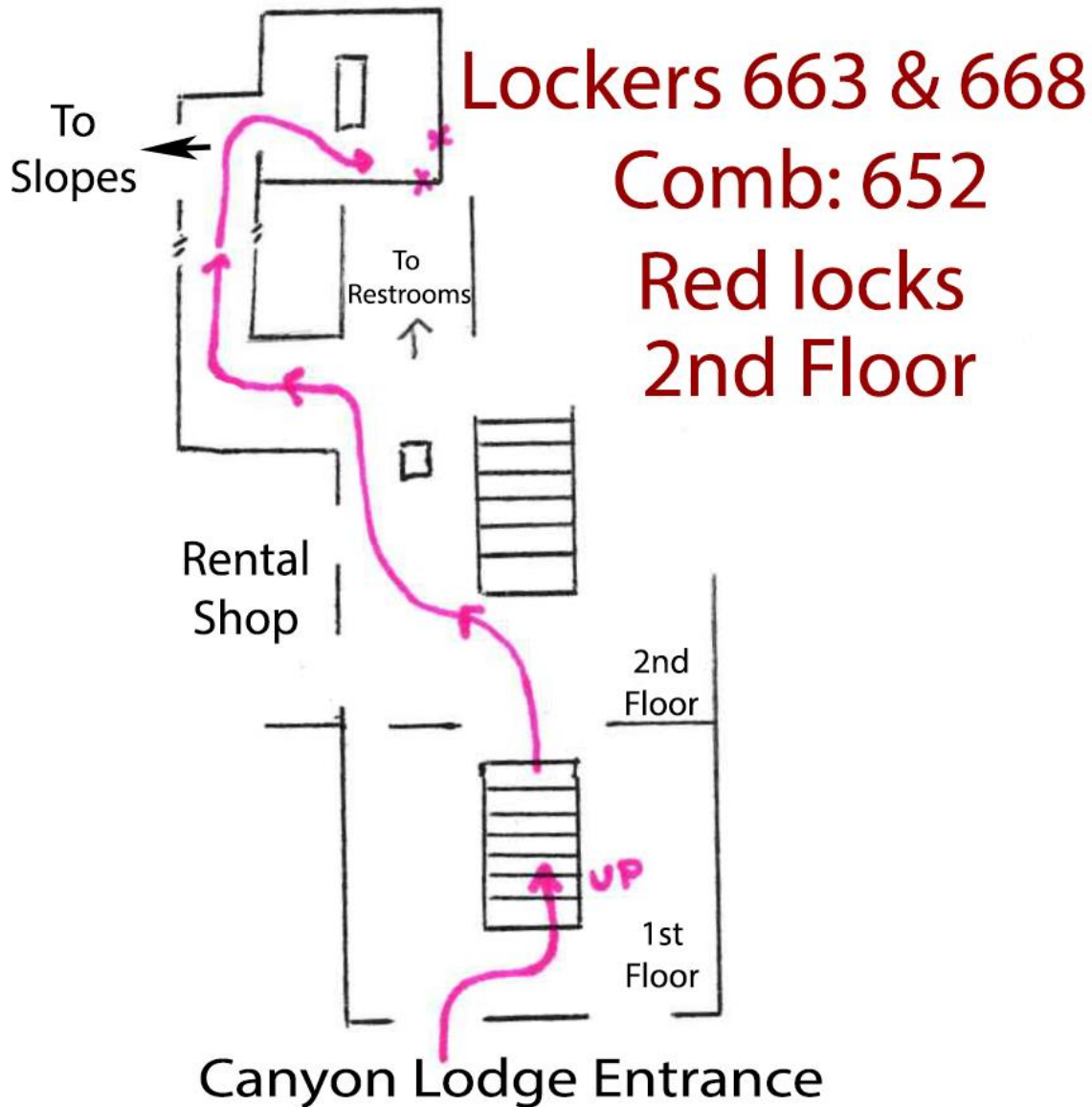
Press & hold remote power button to turn off when done

BE SURE TO TURN IT OFF OR REMOTE BATTERIES WILL DIE

Press HOME on TV remote to Watch FireTv



Gondola Chalet Seasonal Lockers

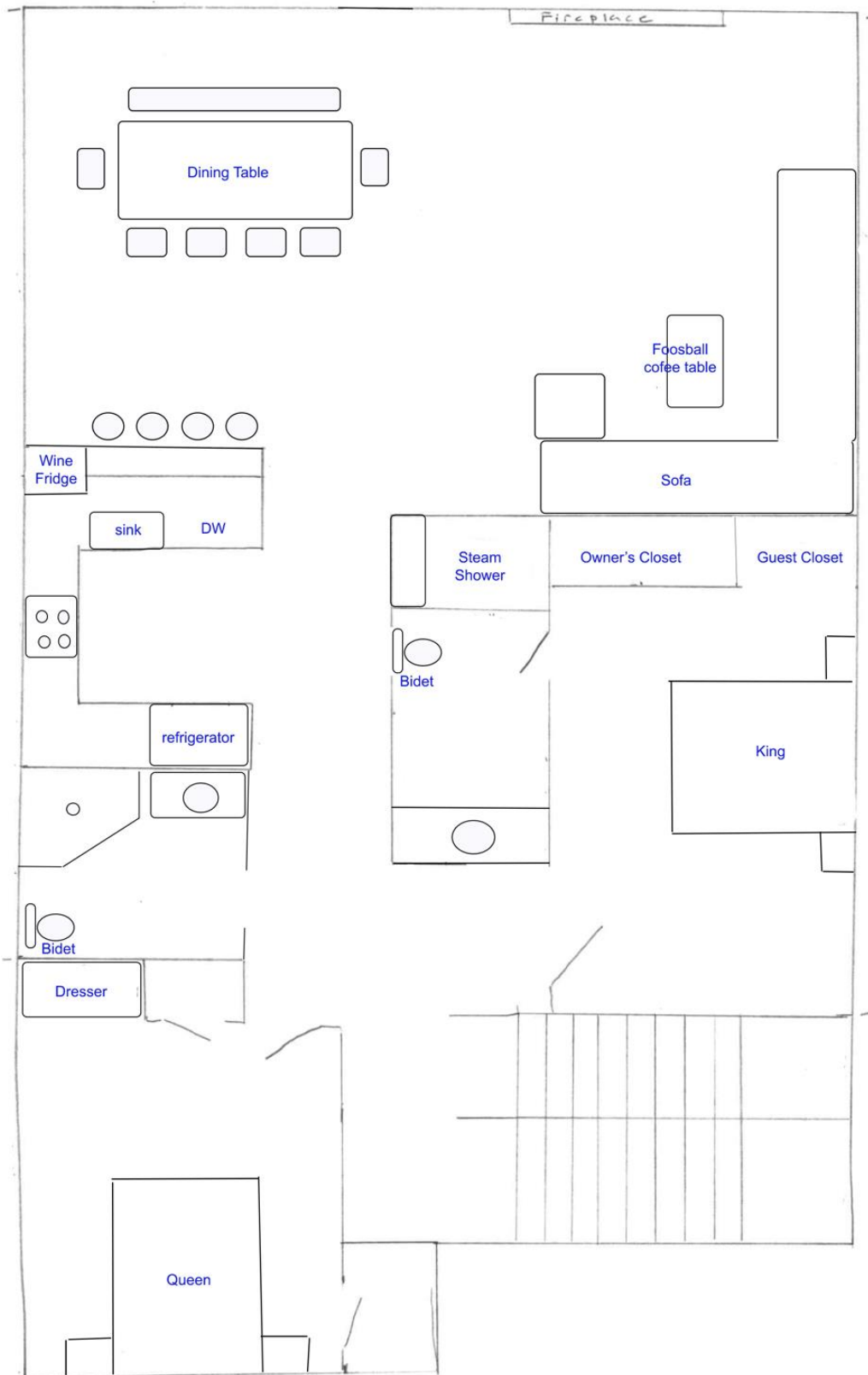


view

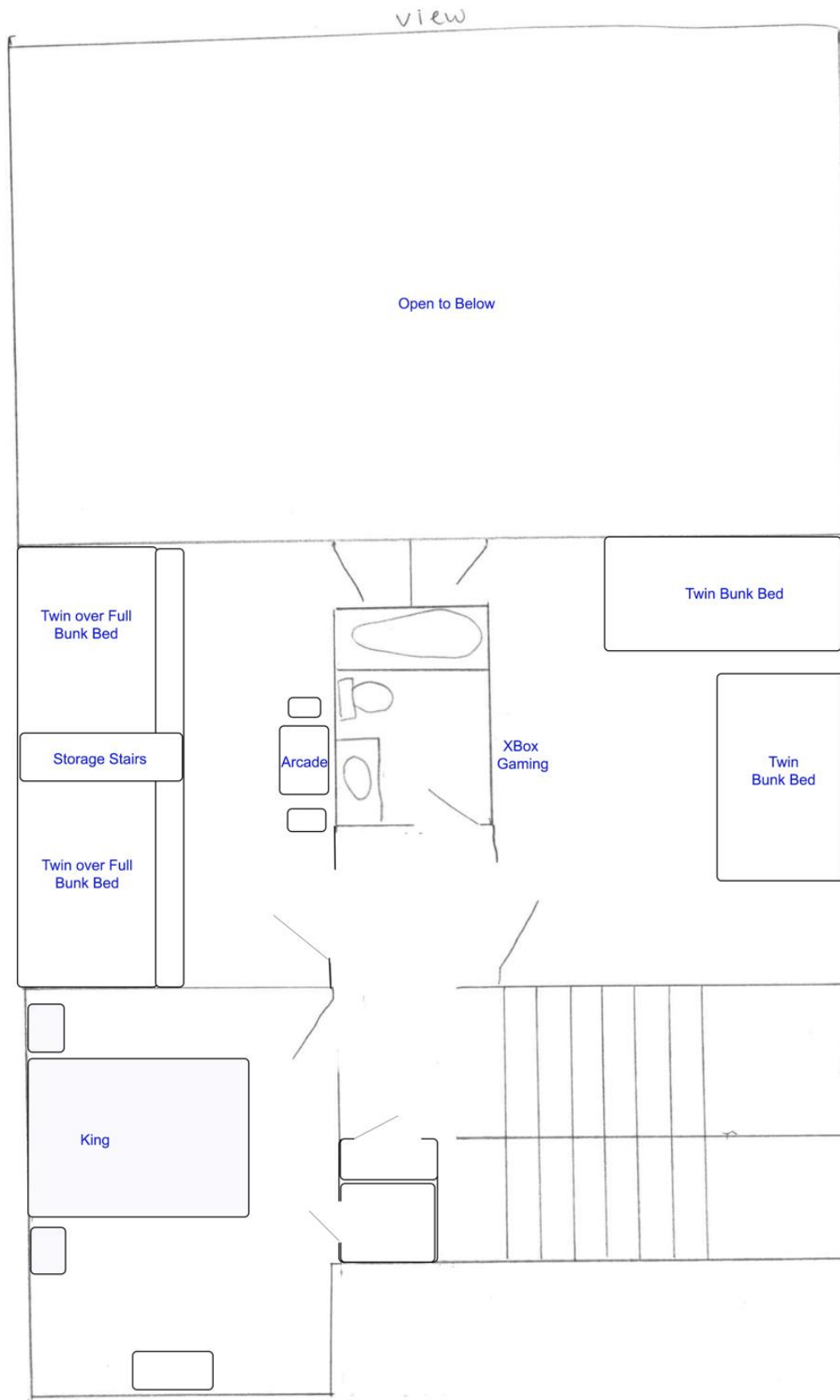
1st
Floor

NOT
TO
SCALE

UNIT
652



2nd Floor
Not to
Scale



Gondola Chalet

826 Lakeview Blvd, Building F, Unit 652, Mammoth Lakes, CA

Owner: Gretchen Anderson, Cell: 207-357-5639 Gretchen@SundayRiverRentals.com

Local Property Manager: Grace Clark, Cell: 805-748-1494

Security Deposit: To avoid charges, please report any existing damages in the unit within 24 hours of arrival. To avoid extra cleaning charge, please load up the dishwasher & start the cycle and take out the trash.

Occupancy: Maximum number of people permitted is 12.

Trash: Dumpsters are located out the unit, to the right. Be sure to lock them after use due to wildlife.

Fireplace: Flue will need to be opened prior to lighting a fire. Fire starter and a lighter are provided. **Please do not remove ashes.**

NO SMOKING IN CONDO. Doing so will forfeit your security deposit.

Housekeeping: To arrange for a mid-stay clean or linen change, please contact Gretchen Anderson. The fee for mid-stay clean and towel change is \$100 paid directly to the housekeepers.

Recreation Area: Hours: 10 am – 10 pm, 7 days a week, **Gate Code 1-3-5**

Internet: Available in the condo and the recreation area. Gondola Chalet, pw gondola1

Emergencies: Dial 911.

Snow Removal: During snow storms, you may be asked to move your vehicle to the street or covered parking area while the parking lot is plowed; however, do not leave your vehicle on the street overnight as it will be towed. Removal of snow around vehicles is the renter's responsibility. Chevron 760-934-8111 will install chains on your vehicle.

Parking: Vehicles without passes may be towed at the owner's expense. Street parking in Mammoth Lakes is prohibited from November – April. Street parking is allowed during the daytime hours at 1849 Condos. **Our unit has 3 parking spaces located out the front door.**

Lost and Found: 1849 Condos is not responsible for lost or stolen items. Items left behind in the unit can be mailed back by the caretaker with a minimum charge of \$50 plus shipping.

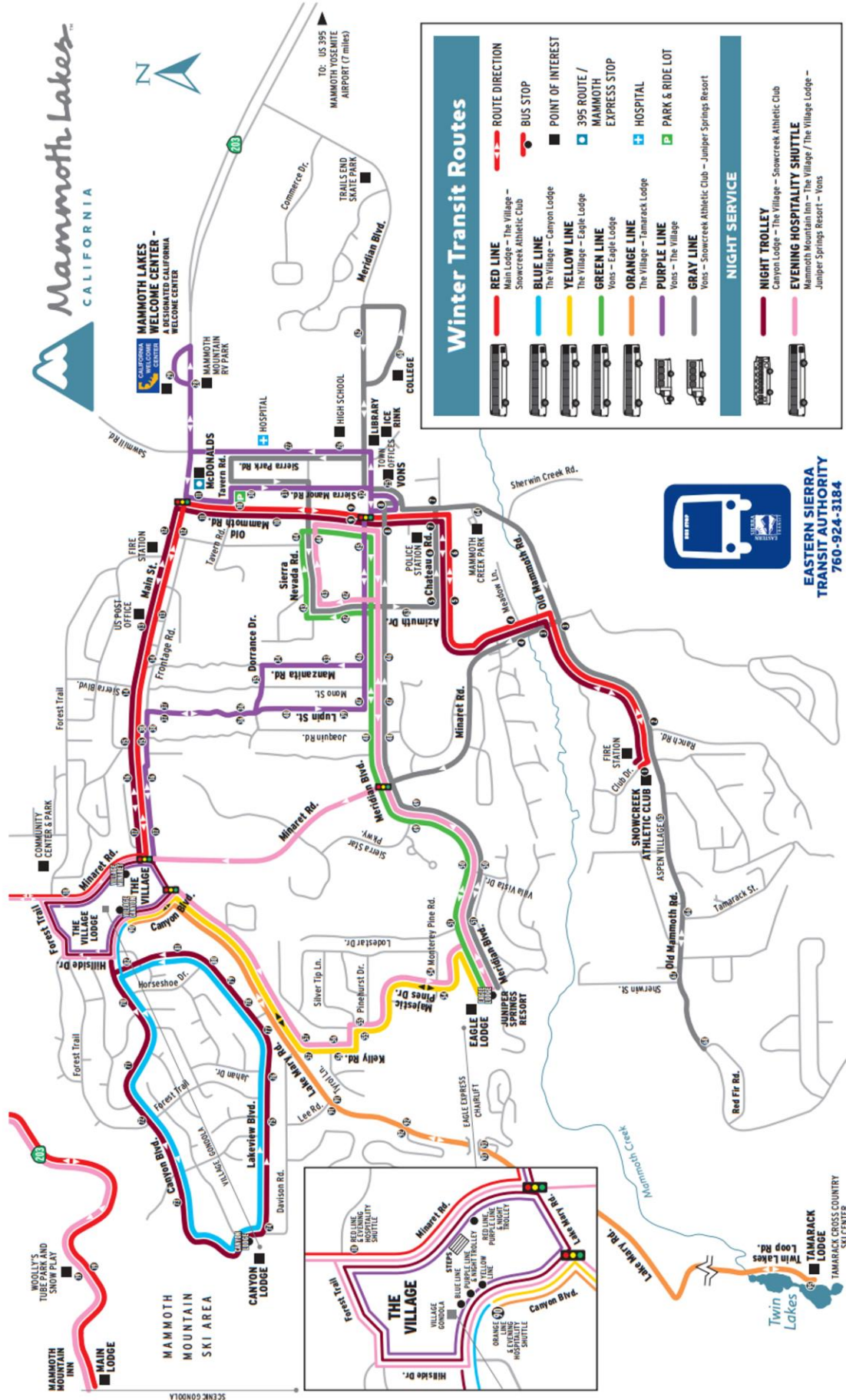
Departure: Please turn all lights and heaters off, remove garbage, start dishwasher, and return the parking passes to the kitchen counter.

Checkout: Checkout is 10 am. A late checkout may be arranged ahead of time when housekeeping and bookings allow. If available, the first 2 hours is complementary. After that a rate of 50% of the daily charge will be assessed.

Notice: The occupant(s) may be cited for creating a disturbance or violating the Quality of Life Ordinance. No parties permitted. Family residential use only. Failure to conform to the parking and occupancy requirements is a violation of the Municipal Code.

Important Phone Numbers

1. Emergency Assistance.....9-1-1
2. Mammoth Hospital.....(760) 934-3311
3. Front Desk.....(760) 934-7525
4. Cal Trans Road Conditions.....1 (800) 427- ROAD(7623)
5. Mammoth Taxi.....(760) 934-TAXI(8294)
6. Ski/Bike tickets, lessons, hours (etc).....(800) –MAMMOTH
7. Black Tie Ski/Board Rental - In condo service!.....(760) 934-7009 (**Special discounts for 1849 guests!**)



Winter Transit Routes

- RED LINE** Main Lodge – The Village – Snowcreek Athletic Club
 - BLUE LINE** The Village – Canyon Lodge
 - YELLOW LINE** The Village – Eagle Lodge
 - GREEN LINE** Vons – Eagle Lodge
 - ORANGE LINE** The Village – Tamarack Lodge
 - PURPLE LINE** Vons – The Village
 - GRAY LINE** Vons – Snowcreek Athletic Club – Juniper Springs Resort
- ROUTE DIRECTION**
- BUS STOP**
- POINT OF INTEREST**
- 395 ROUTE / MAMMOTH EXPRESS STOP**
- HOSPITAL**
- PARK & RIDE LOT**

NIGHT SERVICE

- NIGHT TROLLEY**
Canyon Lodge – The Village – Snowcreek Athletic Club
- EVENING HOSPITALITY SHUTTLE**
Mammoth Mountain Inn – The Village / The Village Lodge – Juniper Springs Resort – Vons

**EASTERN SIERRA
TRANSIT AUTHORITY**
760-924-3184

<https://www.youtube.com/watch?v=l-BUbwSNNgQ>



1849 CONDOS

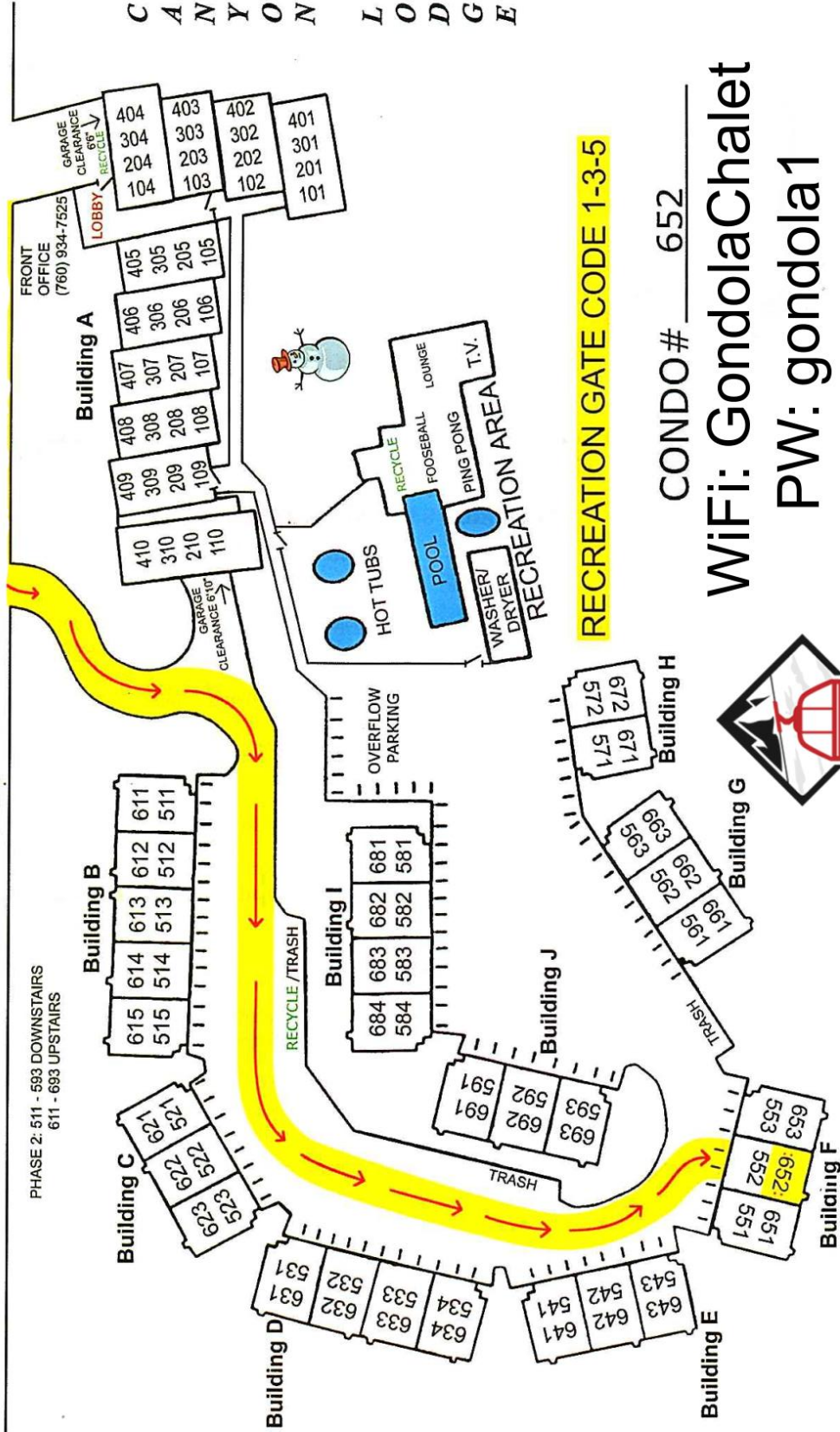
VILLAGE GONDOLA &
CANYON LODGE CHAIR
LIFTS 6-7-8-16-17-22

TOWN &
THE VILLAGE

← BUS STOP
(EVERY 20 MIN.)

826 LAKEVIEW BLVD

PHASE 2: 511 - 593 DOWNSTAIRS
611 - 693 UPSTAIRS



CANYON LODGE

RECREATION GATE CODE 1-3-5

CONDO # 652

WiFi: GondolaChalet

PW: gondola1



GONDOLA
CHALET