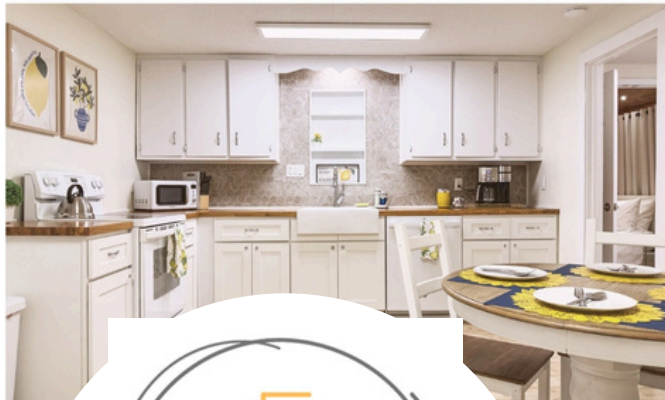
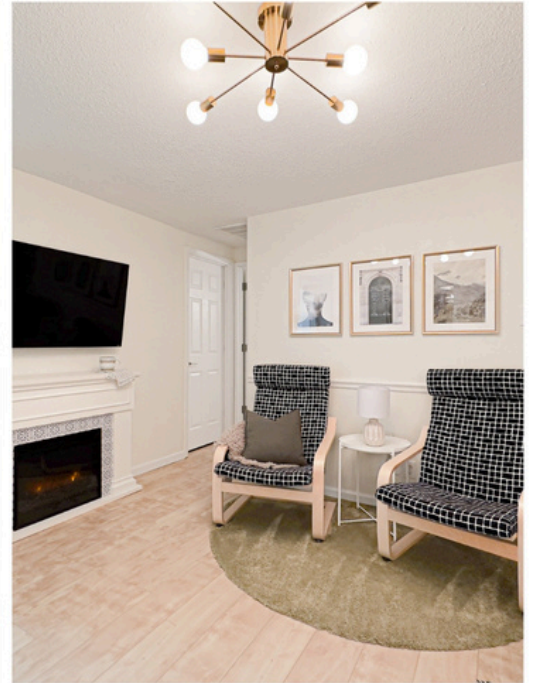


## A Cozy Boho Retreat



# *Welcome*

## TO THE SIMPLY SALEM COTTAGE



# Meet your hosts

## THE WATSON FAMILY

Originally from California, we also lived in Montana before settling here in Salem. Jordan is a mining engineer by day and fix-it man extraordinaire; Sarah works part time as a nurse and full time as mom/wife/life manager. Traveling as a family is both exhilarating and exhausting - we know! We want to make your stay as easy and comfortable as possible - so let us know how we can do just that.

ENJOY YOUR STAY,

*Sarah, Jordan, Brock, Levi & Nolan*



rockfirerentals@gmail.com



@rockfirerentals



/rockfirerentals

# About the home



305 W. 2ND ST.  
SALEM, MO 65560

You are free to access the entire house and yard. There are two locked closets that we ask you not to access - the hot water heater closet in the kitchen and the owner's closet in the back bedroom. If you need any assistance or supplies, please reach out to us immediately and we will do our best to help.



# *Emergency info*

## RESOURCES



### EMERGENCY

dial 911



### HOSPITAL

Salem Memorial District Hospital  
35629 MO-72, Salem, MO 65560  
(573) 729-6626



### POLICE DEPARTMENT

Salem Police Department  
500 N. Jackson St, Salem, MO 65560  
Non-emergency line: (573) 729-6550



### FIRE DEPARTMENT

Dent County Fire Protection District  
2 S. Main St., Salem, MO 65560  
(573) 729-3250



### PHARMACIES

Vandivort's: 117 W. 4th St, (573) 729-4114  
Moser's: 900 S Main St, (573) 729-3300  
Sinks/Country Mart: 1204 MO-32, (573) 729-4091  
Walmart: 1101 W Highway 32, (573) 729-4131



### ROADSIDE ASSISTANCE

Whitaker Towing: (573) 729-4533  
Terrill Auto Repair: (573) 729-5761

# *Emergency info*

## RESOURCES



### URGENT MATTERS/AFTER HOURS:

If we don't answer the first time, call back right away please!

Sarah Watson: (209) 535-5530

Jordan Watson: (209) 765-3749

Sometimes Sarah is sleeping or Jordan is underground; if you can't reach us, please call Kevin Moore at (417) 254-4865



### VETERINARIANS

Mid Ozark Animal Health Center  
(where we take our pup Yogi)  
900 MO-32, Salem, MO 65560  
(573) 729-4031

Dent County Veterinary Clinic  
403 N Henderson St, Salem, MO 65560  
(573) 729-6100

South Central Vet Clinic  
4823 MO-19, Salem, MO 65560  
(573) 729-0978



# *House rules*



## **NO SMOKING**

Cleaning fee of \$500 charged if evidence of smoking is found (smell, trash, etc).



## **SECURITY**

Cameras are present and active (front porch, kitchen porch) for your safety. They are not normally monitored.



## **NO PARTIES**

Gatherings with more than maximum amount of guests will result in immediate forfeiture of reservation.



## **PETS**

Well behaved dogs are welcome, no other types of pets allowed.



## **GUESTS**

No more than 6 adults allowed overnight.



## **QUIET TIME**

Please be quiet  
10 PM – 7 AM.

# *Check-in/Check-out*

4PM/10AM

If you need a later check-out, please ask the day prior.  
We're happy to accommodate you if at all possible!



## *WiFi / TV*

Each TV has a Roku box attached.

1) Power on the TV using the TV remote

2) Make sure input is set to HDMI

3) The Roku screen will pop up and you will be able to use the Roku remote to navigate from here. Feel free to add channels and sign into your favorite streaming services - the Roku will log you out on the date you set, as it is in "guest mode".

You may also use any of the Roku channels to watch free TV/movies. Tubi, Crackle, Peacock, PBS Kids, and YouTube are popular choices

**WIFI NETWORK:** Simply Salem Cottage Guest 2.4 or  
Simply Salem Cottage Guest 5G

**PASSWORD:** welcome2salem

## *AC/Heat*

The thermostat is located on the living room wall just left of the TV.

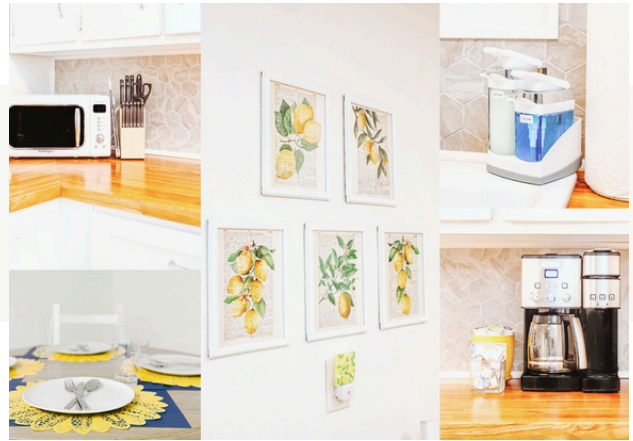
Adjust the temperature as you please by touching the degrees and then scrolling up or down and selecting 2 hours, 4 hours, or "until I change it". The default temperature is 69F-73F.

The cottage has a heat pump unit, so the fan may run more than you're used to and the HVAC will operate best if you do not change the temperature settings often.

To turn on/off the fireplace, simply toggle the switch on the front up/down. One switch is for heat, the other is for faux flames - they can be on individually or both at the same time.

**\*Please turn fireplace off if you leave the house**





## *The Kitchen*

The Kitchen is stocked with coffee, creamer, tea, spices, and some paper products - feel free to use what you need.

*If anything is missing, running out or not working properly, please let us know and we will fix the problem immediately.*

---

## *Garbage/Recycle*

Upon check-out, please remove all garbage from kitchen and bathrooms into outdoor bin.

*The garbage bin stays out on the far side of the driveway near the road. Garbage gets picked up every Thursday morning.*



## *The Bathrooms*

The front bathroom tub faucet has the hot/cold reversed (oops). So for hot water, please spin the lever towards blue.

The front bathroom tub stopper works by twisting the squarish overflow cover. **Clockwise closes it - counterclockwise opens it.**

---

## *Linens*

Extra pillows are in a zipper bag in the laundry room, as well as an extra set of queen sheets. Extra king sheets are in the closet in the blue bedroom. Extra blankets and bath towels are in the linen closet across from the front bathroom.

*If you use the extra linens/pillows, please let us know so we can replenish them.*

# Power Outage

In the event of a power outage, battery operated flashlights are located in the laundry room on the shelf near the first aid kit.

Please contact us right away to let us know the power is out so we can check with the utility department and give you an estimate of when it will be restored.



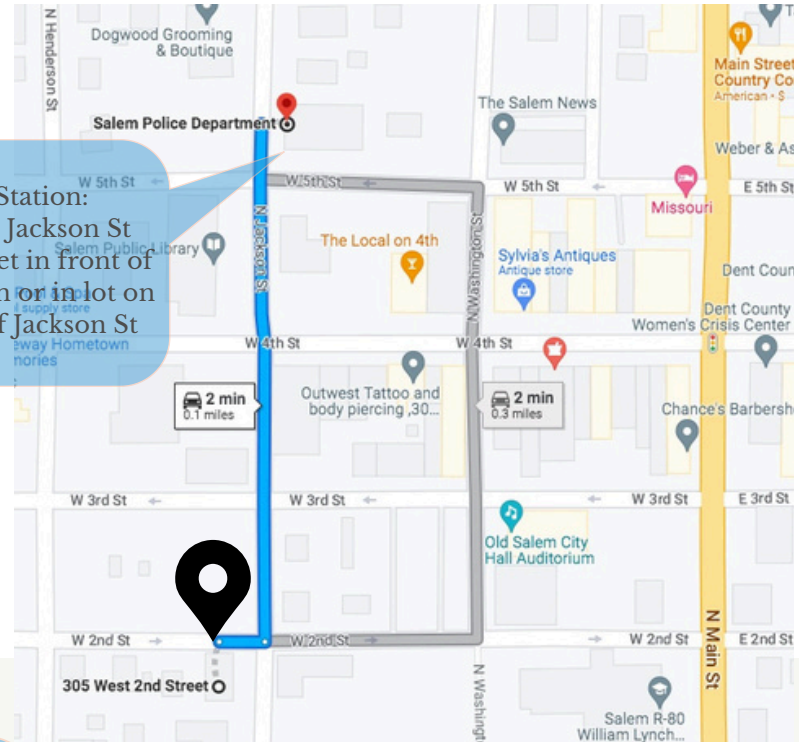


# Severe weather plan

If storms are in the forecast, please monitor the weather closely. Since the house does not have a basement, in the event of a tornado WARNING, take cover immediately at the city hall or at the Salem police station.

You can call the Salem Police non-emergency line prior to severe weather at 573-729-4242 to verify whether the City Hall will be open for shelter (it usually is). The Salem Police station is open 24/7.

Police Station:  
500 North Jackson St  
Park on street in front of  
Police station or in lot on  
west side of Jackson St



City Hall: 200 North Washington St.  
Park along 3rd Street and enter  
through doors off 3rd Street. Use  
doors with stairs going down to take  
shelter in basement. 3rd St is one-  
way heading west so you will need  
to drive east on 2nd, go left on  
Main, and left again on 3rd.







## *Transportation*



### WALK

Just a short walk to  
groceries,  
restaurants, parks



### BUS

Bus Stops are on  
Pandosy and Richter  
Street



### TAXI

Cab Company  
123.123.1234  
111.222.3333

---

## *Parking*

The driveway holds three vehicles while still being able to close the gate. Street parking is available but be mindful of time as it is one hour parking

*\*\*Do not block neighbors driveways or crowd the street with vehicles. If you need more space for parking, park up the street.*



## *Where to eat: in Salem*



### **ARANDAS MEXICAN RESTAURANT**

The best salsa & fajitas, bar seating, and carry-out available  
(573) 729-2196

### **JB MALONE'S BAR & GRILL**

Steaks, entrees, & appetizers; live music on the weekends  
(573) 729-6881

### **BIGOS MEXICAN RESTAURANTS**

Great margaritas and street tacos w/ outdoor seating  
(573) 729-8600

### **REGINE'S COMMON KITCHEN**

Breakfast, sandwiches, dinner entrees and weekend specials  
(573) 453-2726



### **THE LOCAL ON 4TH**

Retro lounge atmosphere, full bar, wings, limited menu  
(573) 453-2702



### **MAIN STREET COUNTRY CORNER CAFE**

Breakfast & lunch all-american diner w/ great desserts  
(573) 729-5050

### **SPRING CREEK CAFE**

Down-home style breakfast/lunch/dinner  
(573) 729-2998



## *Where to eat: in Salem*

### **YANGTZE CHINESE RESTAURANT**

Buffet, seated, or carry-out options w/ friendly service  
(573) 729-5995

### **PIZZA INN**

Pizza buffet & salad bar, or order for pick-up or delivery  
(573) 729-8585

### **CURRENT RIVER KITCHEN**

Outdoor seating or carry-out only; great paninis w/ sides  
(573) 453-2888

### **CHINA KING**

Limited seating, so carry out is best; wide selection  
(573) 729-8882

### **COUNTY ROAD COFFEE**

Specialty coffee shop with refreshers & sodas, too  
(417) 699-6315



### **ASHTONS COFFEE SHOP**

Full coffee & tea menu w/ beans roasted in-house; pastries  
(573) 739-9949



### **CUSTARD BY C-SUE**

Homemade custard creations in a cute outdoor setting  
(573) 247-5489



## *Where to eat: out of town*



### **BIG ROCK CANDY MOUNTAIN**

Grill & bar in a camping resort setting with a retro/hippy vibe. Live music and events. Open March-November.

(417) 932-1223

### **ECHO BLUFF STATE PARK - CREEKSIDE GRILL**

Tasty food w/ local options in scenic setting. Outdoor seating available. Reservations recommended. Lodge is a nice place to relax by the fire in the winter, or sit by the river in the summer, so leave extra time!

(417) 932-1223

### **THE JADWIN OUTPOST TRADING & GRILL**

Diner type food & burgers with large portions, in a one-stop-shop gas station. Worth the drive! Hwy 19 south, right on K Hwy, then go 9 miles to Jadwin.

(573) 729-0040





## *Things to do: in Salem*

### SALEM BOWLING CENTER

Classic bowling alley with food & drinks and arcade

1201B E Scenic Rivers Blvd, Salem - (573) 739-4201



### OZARK NATURAL & CULTURAL RESOURCE CENTER

Rotating exhibits, historical information, and local guides in a building with iconic Ozark mural. Definitely worth a visit! Open 9-5 M-F.

202 S Main St, Salem - (573) 729-0029

### BONEBRAKE CENTER OF NATURE

Slice of nature right in town - explore the grounds at your own pace. Walking paths, pond, and creek.

601 N Hickory St, Salem

### SALEM AREA CHAMBER OF COMMERCE & VISITOR CENTER

Maps, pamphlets, and lots of info about our town & area

1136 S Main St, Salem - (573) 729-6900

### SALEM CITY PARK

Great playground for kids with extensive structures. Splash pad open from Memorial Day - Labor Day.

1200 W Rolla St, Salem



## *Things to do: in Salem*



### FRISCO WALKING PATH

Paved walking path along an old narrow-gauge railroad track, about 0.8 miles one way. Walk west on 2nd St to McArthur, turn north for one block. Turn west again on 3rd St, and walk over the hill 1.5 blocks. You will see the paved path on your right heading north. It crosses Rolla St and keeps going, ending past the water treatment plant at Spring Creek. Gorgeous walk in the fall and spring!

300 N Grand St, Salem



### SHAWNEE MAC LAKES CONSERVATION AREA

Two small peaceful lakes with walking trails just 3 miles away. Non-motorized boats and fishing allowed, restrooms and picnic tables available. Each lake has a shoreline loop, or go around both for a roughly 2 mile walk. Take Highway 19 (Main Street) north, go right/east on 10th street. Follow the curves until it becomes Co Rd 4110. Go about a mile, then turn right into rec area (gravel road). Boat dock is first parking area; bathrooms are second one.

2200 County Rd 4110 (411 on Google), Salem

### OZARK VIKING MEADERY

Handcrafted one-of-a kind mead for tasting and sale. Multiple flavors! Monday-Saturday 9a-3p or call for tasting appointment.

407 East 4th Street, Salem - (573) 247-2644



## *Things to do: in Salem*

### DENT COUNTY MUSEUM

Located in a historic home built in 1895, displays of period furniture, outfits, toys, and Dent country history. Open on Sundays from 1-4 pm.

400 N Persing St, Salem



### TIGER TRAIL

A gently graded gravel walking loop through woods but in town (it circles the Salem Upper Elementary school). 1.2-1.8 miles depending on which side trails you take. Trail map is on a sign near the north parking lot.

419 E Roosevelt St, Salem - park at the north parking lot

### SPRING CREEK GOLF COURSE

Scenic 9-hole golf course rated best in Southwestern Missouri. Non-members play Mondays and Tuesdays.

99 County Rd 3220, Salem - (573) 729-3080



## *Things to do: out of town*

### BO'S HOLLOW

Quaint historical town, great for exploring with kids. Lunch available. 22 miles away - close to Montauk.

(573) 548-2429

### THE FUGITIVE BEACH

Family-friendly water park featuring a quarry beach, slides, cliff jumps, a restaurant & more. 18 miles away, head north on Hwy 72 towards Rolla and it's on the left.

16875 County Rd 5285, Rolla, MO 65401 -

### URANUS FUDGE FACTORY AND GENERAL STORE

A must-see stop on Historic Route 66 - fresh fudge, candy selection, gift shop, with the entertaining slogan "The best fudge comes from Uranus!". Right off I-44 heading west.

14400 State Hwy Z, St Robert, MO 65584





## *Things to do: out of town*

### **MONTAUK STATE PARK**

Famous for trout fishing, springs, and scenic trails. Also a fish hatchery (take quarters & cups for fish food!) and play grounds for kids, and a historic mill. 20 miles away - go west on Hwy 32 then south on Hwy 119.

345 County Rd 6670, Salem, MO 65560

### **DEVIL'S WELL**

Unique staircase down to view an underground lake. Picnic area and Cave Spring trailhead also here. Cave Spring trail is 4.6 miles round trip, moderate intensity, with cliff overlook. 23 miles away: take Hwy 19 south, turn right (west) on KK Hwy, go 2 miles. Turn left on Devil's Well Rd, go another 1.5 miles to parking area.

### **CURRENT RIVER STATE PARK**

Recreation area along the Current River with picnic tables, river access, and hiking trails. Take Hwy 19 south for 25 miles until you see the sign, turn right into the park.

11053 County Rd 19-D, Salem, MO 65560

### **ECHO BLUFF STATE PARK**

Missouri's newest state park: Hiking trails, cliff overlook (gorgeous in fall!), extensive play area and splash pad for kids, easy river access, and lodge with gift shop and restaurant inside. Wild horses in the vicinity and sometimes can be seen here. Take Hwy 19 south for 29 miles until you see the sign, turn left into the park.

35244 Echo Bluff Dr, Eminence, MO 65466





## *Things to do: out of town*

### **ROUND SPRING & ROUND SPRING CAVE**

Paved trail leading to spring overlook, where Round Spring flows under a natural bridge to join the Current River. Picnic areas and scenic campground nearby. Round Spring Cave is viewable only by ranger guided tours, Memorial Day - Labor Day. Purchase tickets in person at the Round Spring Ranger Station.

345 County Rd 6670, Salem, MO 65560

### **WELCH SPRING AND HOSPITAL RUINS**

Flat 0.5 mile gravel path leads to Welch Spring, and across the spring branch, old Hospital Ruins. It is possible to climb up and behind the spring ledge to get over to the ruins, or you may wade across the spring branch down low where it joins the Current River (no wading or swimming in Welch Spring allowed). A unique and picturesque lunch spot! Take Hwy 19 south, turn right on K Hwy. Stay on K Hwy for 19 miles (well past Jadwin). Sign and gravel road will be on the right. If you get to Aker's Ferry, you went too far.

### **INDIAN TRAIL TOWERSITE**

Historic fire tower - one of three still climbable in Dent county. Take Hwy 19 north toward Cherryville/Steelville; go 13 miles. Turn right onto MO-117, go 3.5 miles, then right onto Co Rd 404 and go 0.7 miles. Parking area at base of fire tower.

Co Rd 404, Salem, MO

# Canoe/Kayak rentals

*We recommend ending your float trip at your vehicle - so park at the outfitter, and then they bus you to the beginning of your trip.  
Take sunscreen & bug spray and have a great time!*



## CARR'S CANOE RENTAL

Check in at the general store across from Round Spring (take Hwy 19 south for 31 miles south from Salem)

32511 MO-19, Eminence, MO 65466  
(573) 858-3240



## CURRENT RIVER CANOE RENTAL

Located at Pulltite, the store for check-in is on the right just as you arrive. To see Cave Spring, float from Aker's to Pulltite.

31104 County Rd EE-356, Salem, MO 65560 - (573) 858-3250



## JADWIN CANOE RENTAL

Pick-up and drop-off from the Upper Current River (Cedar Grove).

8754 Hwy K, Jadwin, MO 65501  
(573) 729-5229 or  
[jadwincanoerental@gmail.com](mailto:jadwincanoerental@gmail.com)

*Scan to Check out*



Open the camera app on your phone, aim at the house, and press the tag that pops up to send a text message.

*Or, just text us at (573) 321-4163*



# *Before you go, please...*



Put all dirty dishes in the dishwasher and start it



Take trash out from kitchen & bathrooms to outside bin



Don't forget to sign our guest book :)



Turn off lights, lock door.



Have a safe trip home and thank you for choosing to stay at our place!



*Thanks for staying!*

WE HOPE TO SEE YOU AGAIN SOON



rockfirerentals@gmail.com



@rockfirerentals



/rockfirerentals

**Book direct with us next time for more savings!**

(573) 321-4163 ~ text, call or email anytime